

## Boarden Surge Protective Devices

### 简介 Descriptions

Due to complicate power supply environment and high risk of lightning/surge damage, the ordinary SPD protection needs to improve performance ensure the life and reliability of outdoor/industrial lighting products. In order to develop the SPD that meets lightning protection for most of LED, including linear driver LED, Boarden electronic customized key components, carefully designed lightning protection solutions, and have developed a series of new SPD with low protection voltage, small size and easy installation.

### 特征 Features

- Modes of Protection: L - N, L/N - PE
- Typical Clamping Voltage: 1500V
- Surge Level 20KV
- Maximum Operating Ambient Temperature: 100°C
- Ingress Protection Level: IP67
- Test Standard: IEC61643-11:2011, EN61643-11:2012, GB/T18802.1-2011

### 应用 Applications

- Power System of Outdoor Lighting
- Power System of Monitoring
- Power System of Air Conditioning
- Power System of Computer Room
- Power System of Telecom

### 技术参数 Specifications

Parameter	Symbol	Condition	Value	Unit
Nominal AC voltage	$U_0$	50-60Hz AC	220	V
Maximum continuous operating voltage (L-N, L-PE)	$U_c$	50-60Hz AC	320	V
Open Circuit Voltage (1.2/50 $\mu$ s & 8/20 $\mu$ s)	$U_{oc}$	$t_p = 1.2/50\mu s$	20	kV
Voltage protection level (@20kV)	$U_p$	L-N	1500	V
		L/N-PE	2000	
Rated load current <sup>1)</sup>	$I_L$		7	A
External Overcurrent Protection <sup>2)</sup>			20	A
Operating Ambient Temperature			-40 ~ +100	°C
Storage Temperature			-40 ~ +100	°C

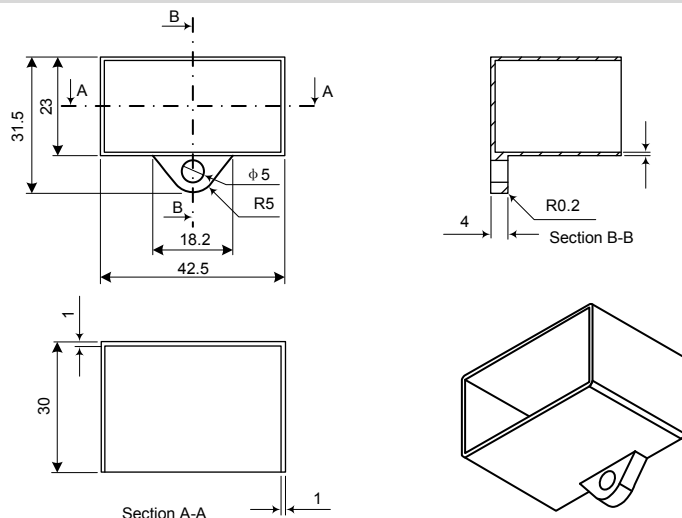
1) For BSP2C20RST

2) Recommended External Circuit Breaker Model: C 20A, Curve C. (Individually Set of Main Circuit).

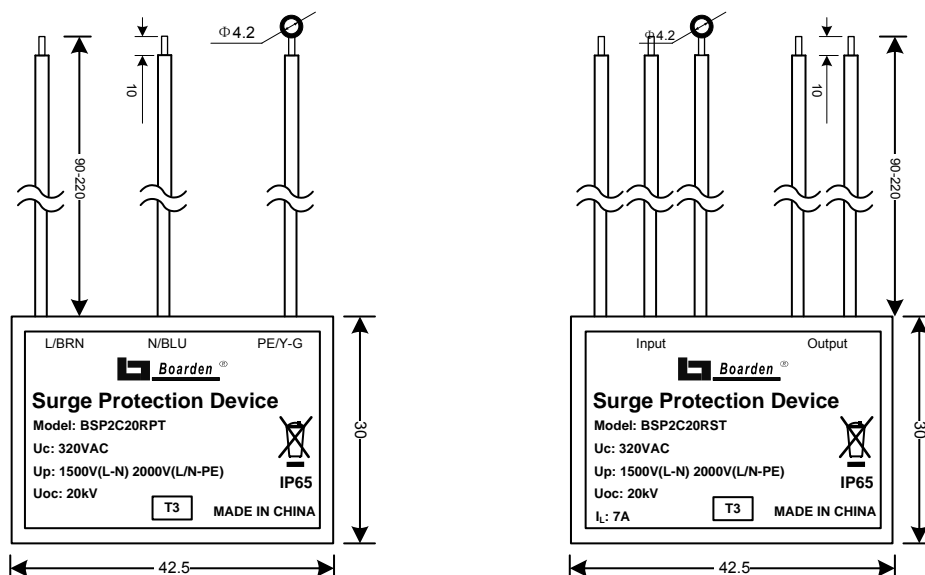
### 型号说明 Part Number System

Part Number	Connection Mode	Line Number	Line Length	Min. Line Diameter
BSP2C20RPT	Parallel Connection	3	90-220mm	1.0mm <sup>2</sup>
BSP2C20RST	Series Connection	5		

## 外壳尺寸 Shell Dimensions (mm)



## 外观 Appearance (mm)



警告: L, N线不得反接

Warning: No reverse connection between L and N lines.

备注 Note:

1. 线材长度、相对位置可能因为客户要求或生产原因而变更

Wire length can be customized, and wires relative position may be changed due to manual operation.

2. 铭牌可能以激光镭射或印刷标签展示

The nameplate may be displayed on laser or printed labels

© 2019 Boarden Electronics Ltd.

Specifications are subject to change without notice.

Website: [www.boarden.com.cn](http://www.boarden.com.cn)

Tel: 86-21-61401058

Fax: 86-21-61730538